

# TP218 Low cost Pressure sensors



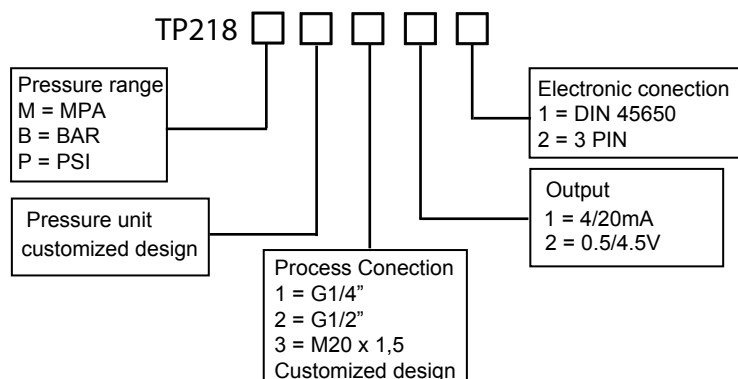
## Features and Applications

Combined Error less than  $\pm 0.5\%$   
Stainless-steel sealed  
Small volume, OEM available  
Excellent stability & repeatability

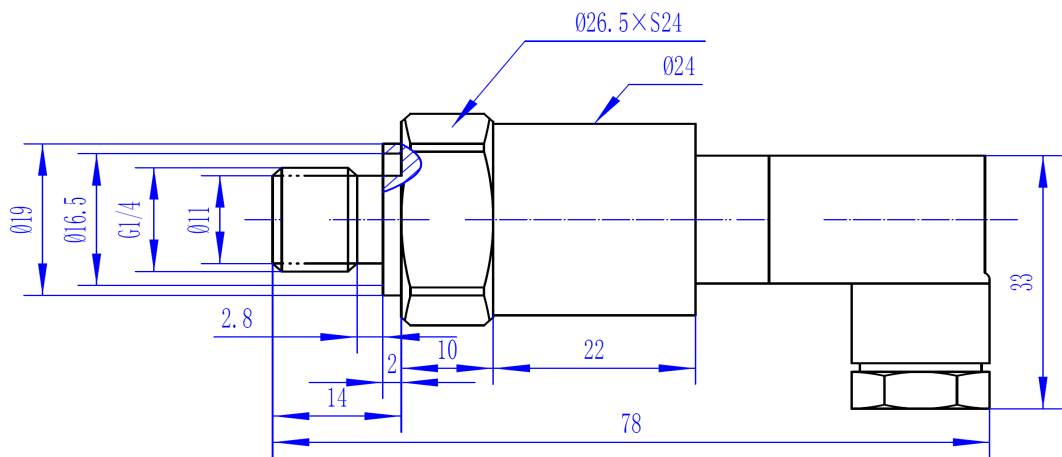
Adopted high-performance sensor chip, TP218B series pressure transducer/transmitter with amplified linearity processing, high performance, small volume and integrated construction, are widely used in air compressor, hydraulic pressure system, constant-voltage water supply system, etc.

## Specifications

Range	0~1bar~600bar	
Accuracy	$\pm 0.5\%FS$	
Power Supply	24Vdc(10~30Vdc)	5V excitation
Output Signal	4~20mA	0.5~4.5V
Zero Temp. Shift	$\pm 0.02\%F.S.$	
Full Span Temp. Shift	$\pm 0.015\%F.S.$	
Repeatability	$\pm 0.09\%FS$	
Bridge Resistance	11k $\Omega$ $\pm 10\%$	
Working Temperature	-40°C~85°C	
Over load Pressure	1.5 $\times$ FS	
Electronic Connection	Hirschmann	
Load Resistance	100M $\Omega$ @ 50V	
Protection Grade	Exiall CT4	
Process connection	G1/4, G1/2 special requirements	



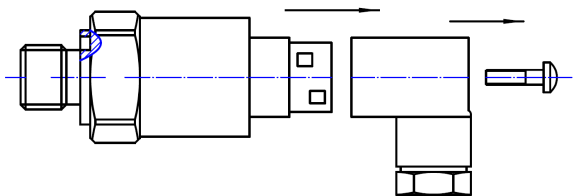
Dimension



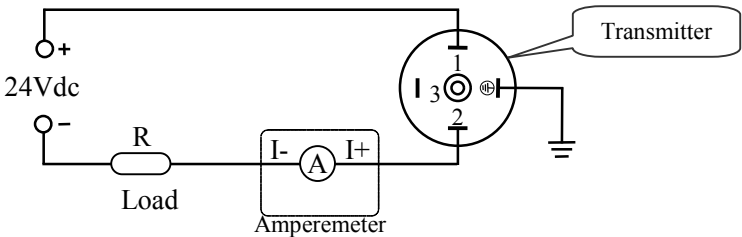
Output	Function	DIN		Output	Function	DIN
0.5-4.5V	Power +	1		Hirschmann DIN Output: 4-20mA	Power +	1
	Signal +	2			Power -	2
	Power -/Signal -	3			Ground	3

1. Wire Connection Guide

As for transmitter with hirschmann connector, screw M3 bolt off by screwdriver when wiring, then pull out hirschmann head, you will find pins.



(1)Two- wire System with 4-20mA , electronic connection as follows:



(2) Three-wire system with 0.5~4.5V(5V power supply) output, electronic connection as follows:

