



ThermoPro™ TP9 Advanced, Intellective Infrared Camera

TP9 is a creationary, advanced and intellective infrared camera provided by GUIDE. Utilizing the latest generation high-performance IR detector with 640×480, the camera not only offers extraordinary high resolution. High sensitivity and high accuracy presented by the real-time thermal images, but also offers the formidable temperature analyzed function, with the ergonomical design, TP9 can make you exclaim.

Features and Benefits

01

High-resolution

Utilizing the latest generation high-performance IR detector with 640×480, 25 μm, the camera offers extraordinary high resolution, high sensitivity and high accuracy presented by the real-time thermal images and the wider filed of view.

Touch screen

The 5.7 inch, semipermeable and half-reflection touch screen delivers convenient operation and observation.

Live video recording

Recording on board and memorizing the temperature data on the SD card.

Built-in visual camera and illuminator lamp

With the 5 million pels high-definition visual camera and the brightness adjustable lamp, we can capture the clean and sharp visual images.

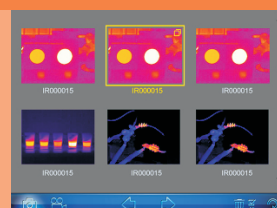
WIFI

Use wifi to carry out remote control and signal transmission with wireless

Applications

02

- Predictive and preventative maintenance
- Equipment diagnostics
- Electricity inspections
- Medical diagnostics
- Building diagnostics
- Researching&development



Specifications

Detector	TP9B	TP9
Detector Type	Uncooled Focal Plane Array	
Spectral range	8 ~ 14 μ m	
Pixels	384×288	640×480
Pitch	25 μ m	25 μ m
FOV/Lens	21.74°×16.39° , 25mm/F1.0	25.8°×19.5° , 35mm/F1.0
Optiona/Lens	7.85°×5.89° , 70mm/F1.05 44.27°×33.93° , 11.8mm/F1.0	11.5°×8.6° , 80mm/F1.1 45.7°×35.1° , 19mm/F1.1
Thermal Sensitivity	50mk	
Frame Frequency	PAL 50Hz/NTSC 60Hz	
Focus	Auto/manual	
Zoom	2x 4x 8x	
Visual Camera	5M pixels	
Image Presentation		
View Finder	0.6" 640×480 OLED	
External Display	5.7" Semi-permeable & Half-reflection touch screen	
Measurement		
Temperature Range	Range One:-20°C-+250°C Range Two:+250°C-+800°C (+2000°C Optional)	
Accuracy	$\pm 2^{\circ}\text{C}$ / $\pm 2\%$ of reading($\pm 1^{\circ}\text{C}$ / $\pm 1\%$ @range one)	
Calibration	Auto/Manual	
Measurement Mode	8 Spot,8 area, isotherm,line profile;Auto hot/cold spot,auto temperature alarm; spots,areas displaying either max, min or average,verticla & horizontal line profile,delta-T,histogram & isotherm in live/zoom/frozen/saved image & video; Auto hot spot & auto alarm in live/zoomde and video.	
IR Fusion	Yes	
Emissivity Correction	Variable from 0.01 to 1.00	
Image Storage		
SD Card	Removable SD card 4G(8G/16G/32G SD Optional)	
Image Format	JPEG with analysis record	
Voice Annotation	Up to 60s/image	
Video Format	H.264(MPEG4 optional)with temperature information uncompressed video	
Laser Locator		
Classification Type	Class 2 semiconductor laser	
Power Supply		
Battery Type	Rechargeable Li-ion Camcorder battery,field-replaceable	
Operation Time	Over 2 hours continuous operation	
Environmental specification		
Humidity	$\leq 95\%$	
Encapsulation	IP54	
Interface		
USB	Work as an USB Flash-disk and transfer all images videos recorded to the PC: Transfer real-time video to PC	
Video Output	VGA/PAL/NTSC	
RS232	Yes	
Wifi	Yes(802.11.a/b/g)	
Illuminator	Yes(Brighyness adjustable)	
Physical characteristics		
size	186mm×106mm×83mm	
weight	1.3kg (include screen and battery)	