



EasIR™ Series

EasIR™ Series is an easy-to-use infrared camera



EasIR™ Series is a new infrared camera of Guide infrared, breaking the infrared world with high performance and low price. Designed for tough work environments and entry-level users, EasIR™ Series is far more robust and shock-resistant for any tough working environment. One-hand easy operation allows skilled users to use the camera without training. Featured with the latest Infrared Blending technology, it helps you pin-point the problem exactly and efficiently. EasIR, easy IR camera for your work.

Features and Benefits

01

Auto Focus

Both infrared and visual image can be easily focused

Flexible Battery Compatibility

Battery capacity shown on the screen

Infra Blending

Helping you identify where the problem exactly is

Navigation Interface

Emissivity shown on the menu

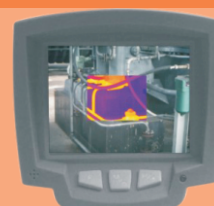
Rugged Design

Capability of drop-resist from 2m

Applications

02

- Predictive and preventative maintenance
- Electrical inspection
- Building diagnostics
- Technical diagnostics
- Veterinarian helper



Specifications

Edition_GD130805

	<i>EasIR™-4</i>	<i>EasIR™-9</i>
Thermal		
Detector Type	Uncooled Focal Plane Array	
Spectral Range	8 ~ 14 μm	
Pixels	160 x 120, 25μm	384 x 288, 25μm
Lens/ FOV	11mm /20.6° x 15.5° 7mm /31.9° x 24.2° 30mm/7.6° x 5.7°	25mm/21.7° x 16.4° 13mm/40.53° x 30.96° 42mm/13.04° x 9.8° 70mm /7.85° x 5.89°
Focus	Auto Focus	Manual
Thermal Sensitivity	80mk	50mk
Electronic Zoom	2X	2X ,4X
Image Frequency	50Hz PAL/60Hz NTSC	
Palette	8	
Visual		
Visual	Camera CMOS Sensor 1600 x 1200 Pixels (2M Pixels)2 ²⁴ True Color	
Imaging presentation		
External Display	3.6" TFT LCD SCREEN	
Video Output	PAL/NTSC	
IR Blending	Visual And IR Blending	
Live Thermal	Video Recording	Video Recording In SD Card
Built-in Flash	YES	
Measurement		
Temperature Range	-20°C to 250°C (350°C , 1200°C Optional)	-20°C to 250°C (400°C , 1500°C Optional)
Accuracy	±2 or ± 2% of Reading	
Emissivity Correction	Variable From 0.01 To 1.00	
Measurement Model	Hot/Cold Point Mark, Center Point And 2 Spot Displaying	Automatic Correction Based On Distance, Relative Humidity, Dew Point Function, Atmospheric Transmission And External Optics 3 Pots/3 Areas
Image Storage		
Media	Removable 4GB Mini SD Card	
File Format	JPEG With Analysis Records	
Voice Annotation	60S /Image	
Laser Locator		
Classification Type	Class 2 Semiconductor A1 GaInP Diode Laser	
Man-Machine Communication		
USB 2.0	For Video And Image Transfer	Real-Time Image (Thermal & Visual), Measurement ,And Voice Transfer To PC, live Video Transfer To PC
Power System		
Battery Type	AA NIMH Battery, or AA Rechargeable Battery	
Charging System	In Camera Or In Battery Charger	
Battery Operating Time	Over 2 Hours Continuous Operation	
External Power Operation	AC Adapter 110/220V AC, 50/60Hz	
Environment Specification		
Operation Temperature	-10°C to +50°C	
Storage Temperature	-20°C to +60°C	
Humidity	Operating And Storing 10% To 95%, Non-Condensing	
Encapsulation	IP54 IEC 529 Housing	
Shock	Operational: 25G, IEC68-2-29	
Vibration	Operational: 2G, IEC68-2-6	
Physical Characteristics		
Size	111mm X 124mm X 240mm	182mm x 112mm x 252mm
Weight	0.73Kg	1Kg