



## *BritIR™ B Series*

# BritIR™ Series is a brilliant tool-like thermographic IR camera



Guide newly launched **BritIR** series is an efficient, budget-friendly and completely equipped infrared camera. This robust and very handy high-tech system thanks to its intuitively learnable handling and user-friendly single hand operation, which makes it an ideal tool for troubleshooting electrical installations, mechanical components, buildings, process equipment, HVAC/R equipment and others.

### Features and Benefits

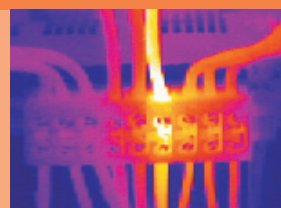
01

- Friendly UI, easy to use without training
- Affordable as entry level diagnostic tool
- Removable Large capacity Li-ion battery, 4 hour working time
- 3.5" large screen with no image cropping, high brightness screen to show image with no detailed information lost even outdoor or in highlight
- Rugged and compact design, metal internal structure
- Standard Micro USB interface for data transmission and charging
- Optional Wi-Fi connection with notebook or mobile

### Applications

02

- Electric inspection and diagnosis
- Building inspection and diagnosis
- Mechanical equipment maintenance
- Manufacturing process service
- Petrochemical industry maintenance



# Specifications

Edition\_GD130805

	B0	B1
Detector	80×80	160×120
Lens	8mm	11mm/7mm/30mm Optional
FOV	18.5° × 18.5°	20.6° × 15.5° /31.9° × 24.2° /7.6° × 5.7°
Frame	50Hz	50Hz
NETD	80mk	80mk
Display	Highlight LCD 320×240	Highlight LCD 320×240
Digital Zoom	3×	2×, 4×
Palette	4	6
Battery	Removable Li-ion Battery,4 hrs	Removable Li-ion Battery,4 hrs
Charging	Charging in camera	Charging in camera
Interface	Standard Micro USB	Standard Micro USB
Video Out	N/A	Yes, through USB
TempRange	0°C~250°C	-20°C~350°C
Temperature Measurement Parameter	Emissivity Adjustable	Emissivity Adjustable
		Reflectivity Adjustable
		Ambient Temp Adjustable
		Distance Adjustable
		Humidity Adjustable
Analysis Function	Center Point Temp Measurement	
	Area Tmax/Tmin Measurement	
	N/A	Area High/Low Temp Alarm
	Tmax/Tmin Locked	Tmax/Tmin Adjustable
Optional Accessories	Quick Charger	
	WiFi SD Card	
	Car Charger	
Encapsulation	IP43, 1m Drop	
Operation Temp	-10°C~50°C	
Size	103mm×98mm×258mm	
Weight	755g	